

HARRY POTTER AND THE SORCERER'S STONE

Suite for Orchestra

J O H N W I L L I A M S

- I. Hedwig's Theme
- II. The Sorcerer's Stone
- III. Nimbus 2000
- IV. Harry's Wondrous World

Viola

I. Hedwig's Theme

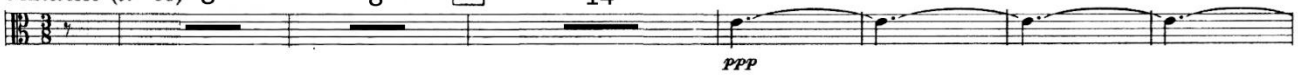
JOHN WILLIAMS

Misterioso (♩ = 58) 8

8

17

14



43



59



75



(♩ = ♩) (♩ = 80) 91



Viola

99

mf

107

7

pizz.

p

p

116

7

arco

mf

mp

cresc.

mf

mp

cresc.

FINE

128 Magico

div.

ff

mf

f marc.

ff

mf

f marc.